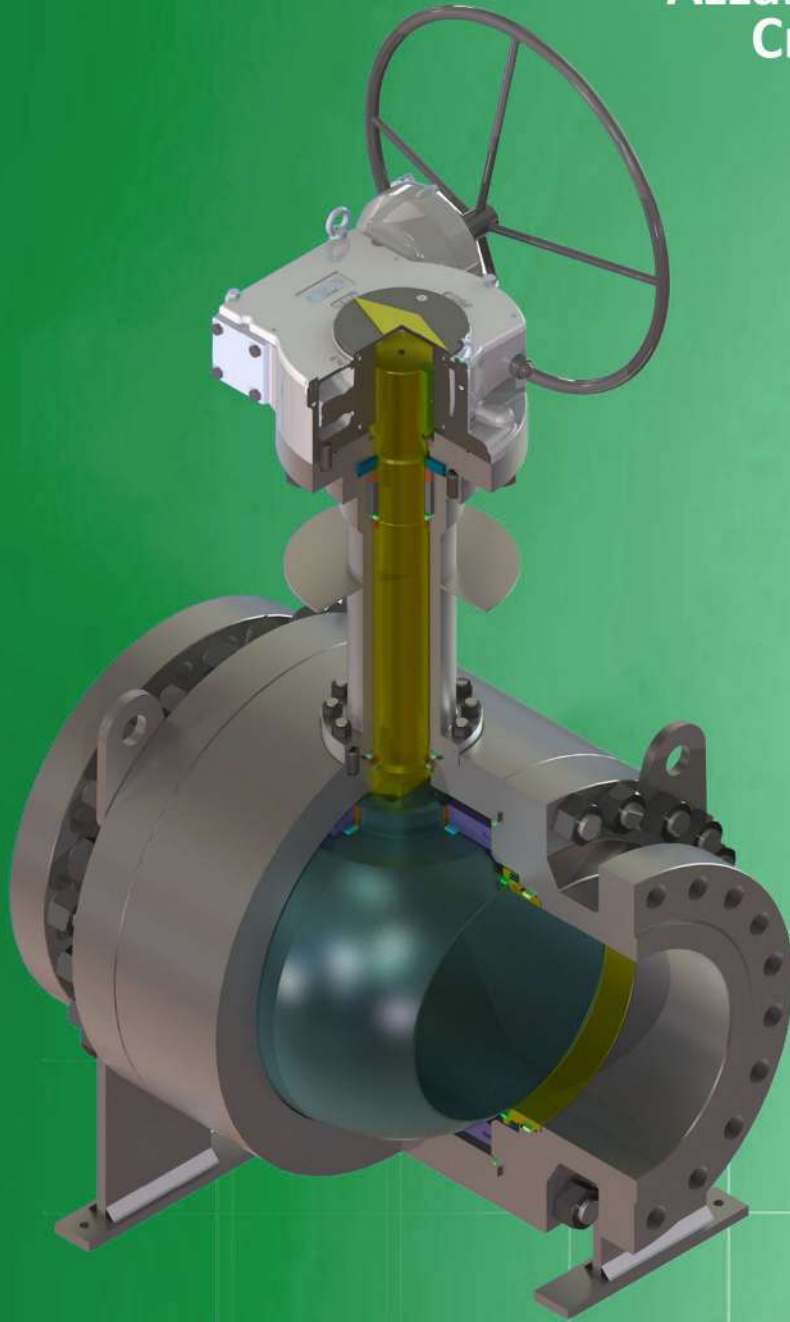


Azzalin® Trunnion Mounted Cryogenic Ball Valves





CRYOGENIC TESTING & FEATURES

Azzalin® Series **CB** & **CGB** Cryogenic Ball Valves are designed, manufactured, and tested in accordance with API 6D, ASME B16.5, ASME B16.34, API 608, ASME B16.10, ISO 28921-1, BS 6364 and MSS-SP-134.



12" 600# ANSI Series CGB



18" 600# ANSI Series CGB



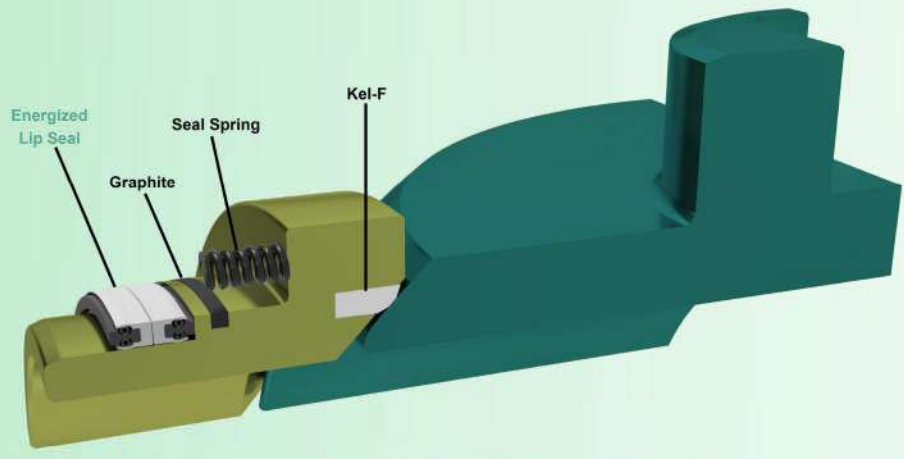
20" 600# ANSI Series CGB

Features:

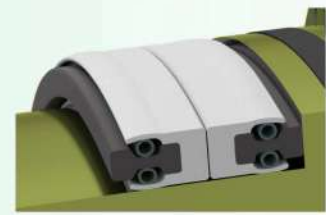
- Bolted body type, 2 & 3-piece
- Trunnion mounted
- Double piston effect x Single piston effect seats
- Full and reduced port
- All forged stainless-steel components
- Anti-blow out stem
- Soft seated and Metal seated
- Anti-Static devices
- API 6D & CSA Z245.15-17
- **SIL 3 Certified by 3rd party organization: FSES**
- ANSI Class 150 to 2500#
- Sizes in 2" to 36"
- **Fire Safe Certified**



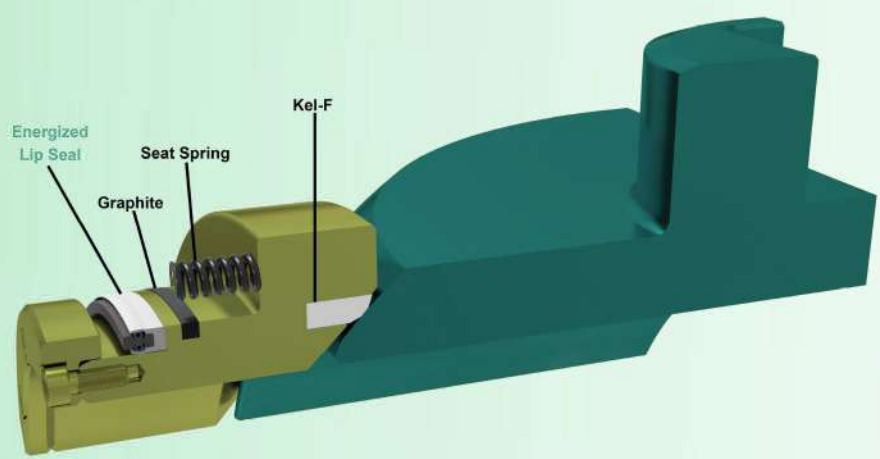
CRYOGENIC SEAT DESIGN



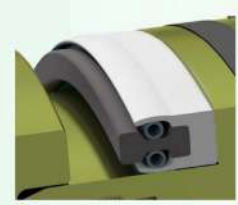
Double Piston Effect



Energized Lip Seal



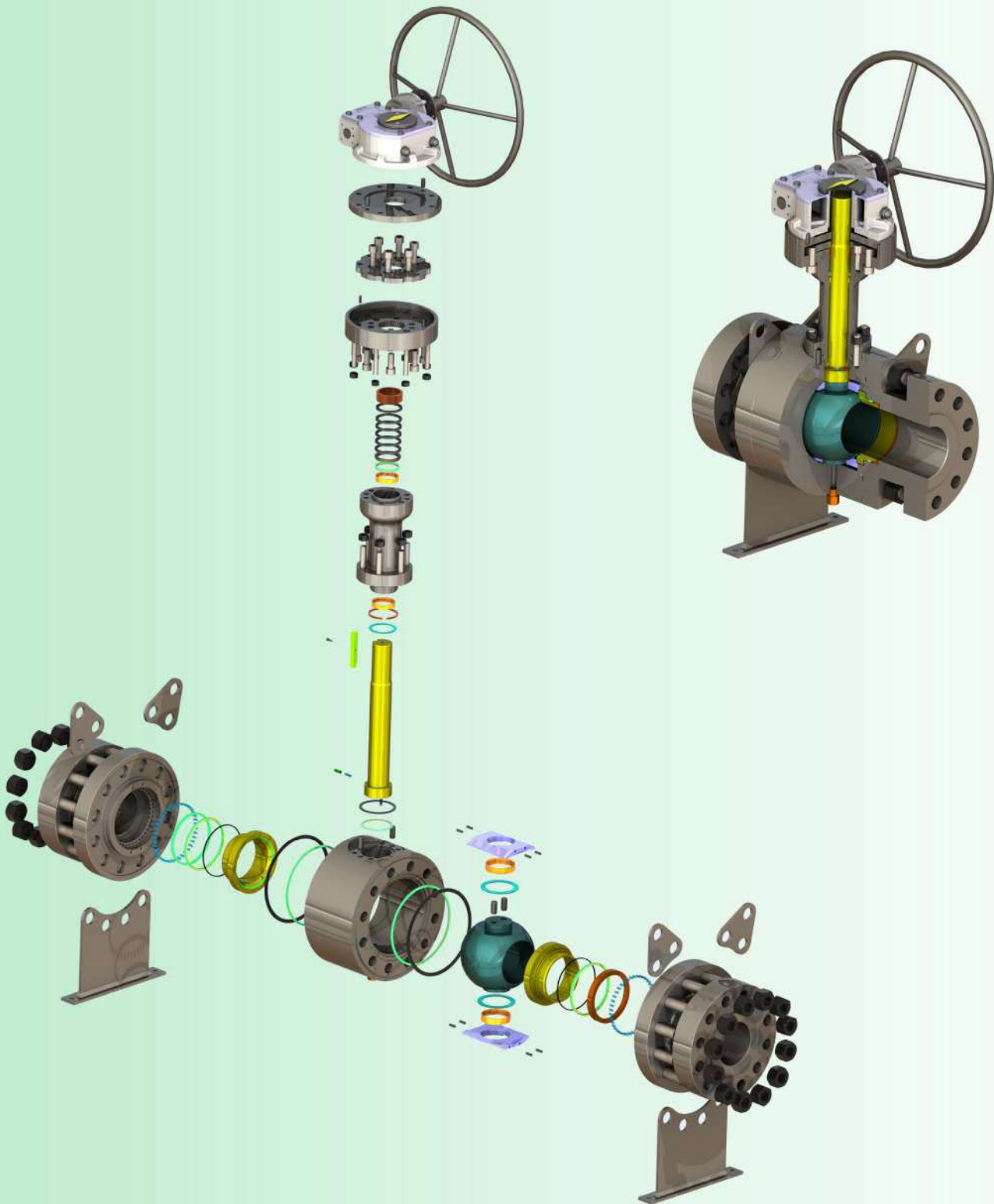
Self Relieving Effect



Energized Lip Seal



MODEL CGB



SIZES: 6" - 36" ANSI CLASS 150 - 1500# & SIZES: 2" - 24" ANSI CLASS 2500#

• For technical data re: dimensions, valve torques, weights etc. please consult factory.